

LAPEER COUNTY

DATA COLLECTION RESULTS



PRESENTERS



CHRIS GREENE HUTCHINGS

Program Manager, Michigan Moonshot

MERIT NETWORK, INC



ALEXIS SCHRUBBE

Consultant

MERIT NETWORK, INC

FCC DEFINITION OF

BROADBAND

Broadband Internet is currently defined by the FCC as a fixed connection that provides a minimum of 25 Mbps download and 3mbps upload.

Broadband service provides users with Internet fast enough for video conferencing, schoolwork, telemedicine applications, video streaming and more.

MODERN DEFINITION OF

BROADBAND

Industry experts suggest that speeds of 100 Mbps/20 Mbps are truly reflective of modern bandwidth needs. These speeds enable multiple users at the same location, content creation, and interactive meeting technologies.

PROJECT GOALS & DESIRED OUTCOMES



- Quantifying availability and demand
- Produce unbiased, granular and accurate household broadband access maps & visualizations including served and unserved residences and businesses
- Produce data to inform infrastructure investment and to challenge federal and state funding maps
- Gather residents' experience with broadband usage and how lack of access impacts quality of life
- Understand residents' positions regarding broadband service pricing and availability in their region
- Obtain insights regarding Internet connectivity capabilities for the county's children, college students and residents working from home

SURVEY METHODS



Survey modalities offered:

- Paper survey by mail
- Online low-bandwidth survey for cellular devices
- Online survey for connected residents
- SMS text message survey

Participants recruited through:

- Community Partner Outreach Program
- Direct mail and email
- Media advertisements and communications

Unserved residents completed a survey only

Served residents completed a survey and a speed test

SURVEY DATA COLLECTED



- Street address
- Number of residents at address
- Number of children under 18 at address
- Number of people taking college courses at address
- Number of residents working from home
- ISP service delivery mode (fiber, DSL, etc...)
- Satisfaction with ISP's service
- M-Lab speedtest results
- Price willingness to receive services
- Recent shopping behavior or service cancellation
- Application needs for household Internet
- Reason for lack of service at unserved households, and more



LAPEER COUNTY

PARTICIPATION OF COMMUNITY POPULATION



City/Township	Total Households	Survey Responses	Response %	Fraction without Broadband - 25/3	Fraction without Broadband - 100/20
COUNTYWIDE	33,971	3,550	10	77.27	98.06
City of Lapeer	3593	159	4.43%	56.60%	94.97%
Dryden Township	1824	173	9.48%	64.74%	95.95%
City of Imlay City	1572	56	3.56%	69.64%	96.43%
Attica Township	1790	221	12.35%	77.83%	96.83%
Hadley Township	1727	224	12.97%	84.82%	97.32%
Lapeer Township	1977	200	10.12%	80%	97.50%
Metamora Township	1637	192	11.73%	64.06%	97.92%
Oregon Township	2129	245	11.51%	74.29%	97.96%
Elba Township	2129	327	15.36%	76.15%	98.17%
Almont Township	2530	327	12.92%	81.35%	98.17%



LAPEER COUNTY

PARTICIPATION OF COMMUNITY POPULATION (Continued)



City/Township	Total Households	Survey Responses	Response %	Fraction without Broadband - 25/3	Fraction without Broadband - 100/20
COUNTYWIDE	33,971	3,550	10	77.27	98.06
Arcadia Township	1264	122	9.65%	85.25%	98.36%
Deerfield Township	2077	206	9.92%	80.10%	98.54%
Mayfield Township	3081	351	11.39%	59.54%	98.86%
Goodland Township	639	92	14.40%	92.39%	98.91%
North Branch Township	1411	113	8.01%	92.04%	99.12%
Imlay Township	1137	158	13.90%	84.81%	99.37%
Marathon Township	1736	179	10.31%	87.15%	99.44%
Burlington Township	519	67	12.91%	97.01%	100%
Burnside Township	664	82	12.35%	100%	100%
Rich Township	535	56	10.47%	100%	100%



KEY FINDINGS

LAPEER COUNTY
DATA COLLECTION

- Served locations
- Unserved locations

PARTICIPANT RESPONSES



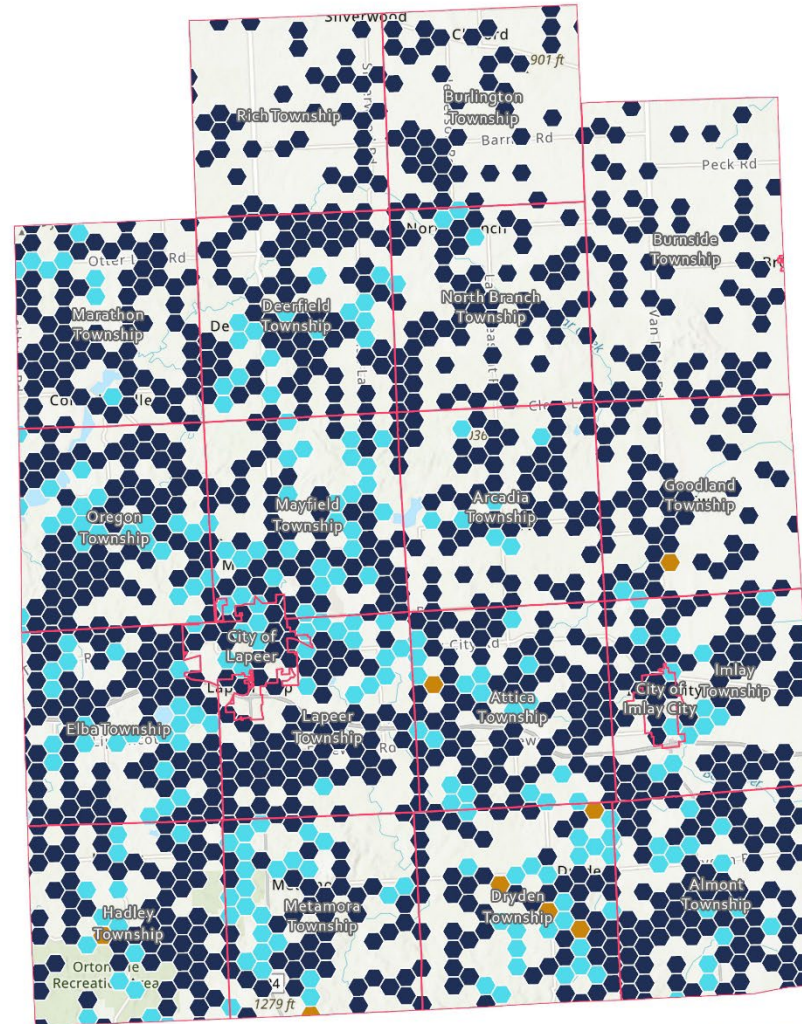
- After the data was cleaned **3,550 surveys** were eligible for analysis
- **1,366 (38%) residents** indicated they had some Internet connectivity
- **2,228 (62%) residents** had no connectivity in their homes
- **1322 households** with Internet access completed a speed test
- The project **margin of error is 1.5%**





LAPEER COUNTY

INTERNET SPEED TEST RESULTS



Esri, NASA, NOAA, USGS, Province of Ontario, Esri, HERE, Garmin, SafeGraph, METI/NASA, USGS, EPA, NPS, USDA, Province of Ontario, Esri, HERE, Garmin, FAO, NOAA, USGS, EPA, Esri, USGS

SERVICE THRESHOLD

Download/Upload (Mbps)

- At or Above 100/20
- Between 25/3 and 100/20
- Below 25/3

SUMMARY STATISTICS

TOTAL: 3,550 speed test locations
 MEDIAN: Download - 0.00 Mbps
 Upload - 0.00 Mbps
 MIN: Download - 0.00 Mbps
 Upload - 0.00 Mbps
 MAX: Download 630.04 Mbps
 Upload 86.15 Mbps



Each hexagonal bin represents the average speed test value for surveys conducted within that hexagonal bin.

**SPEED ESTIMATION
OF LAPEER COUNTY**

PROJECT: LAPEER

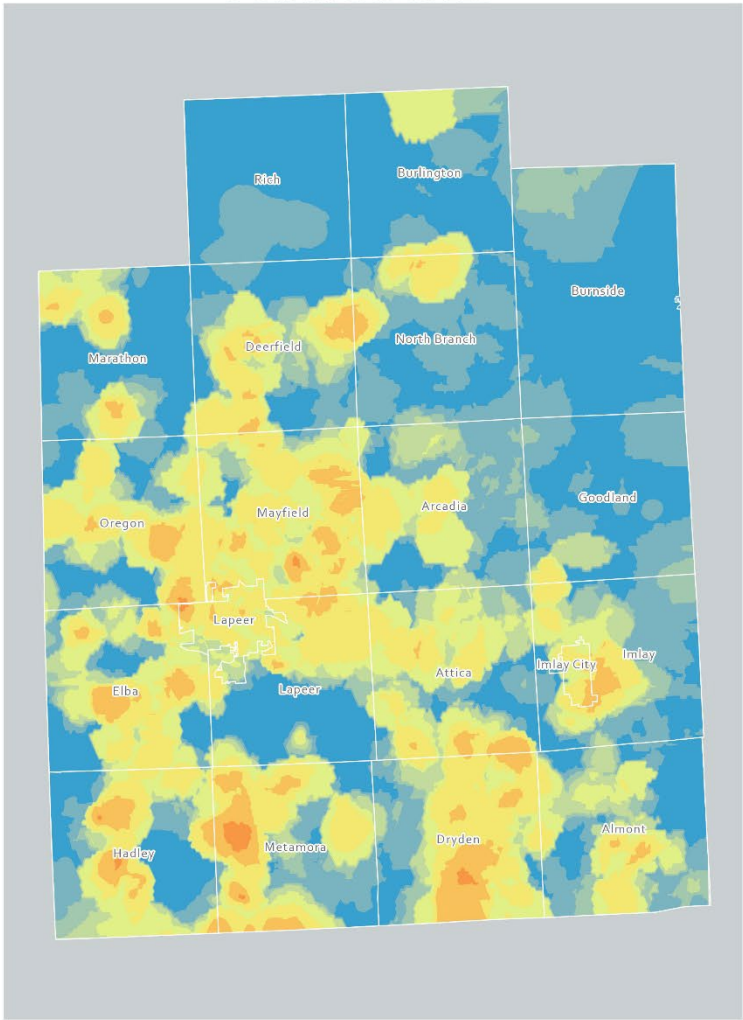


LAPEER COUNTY

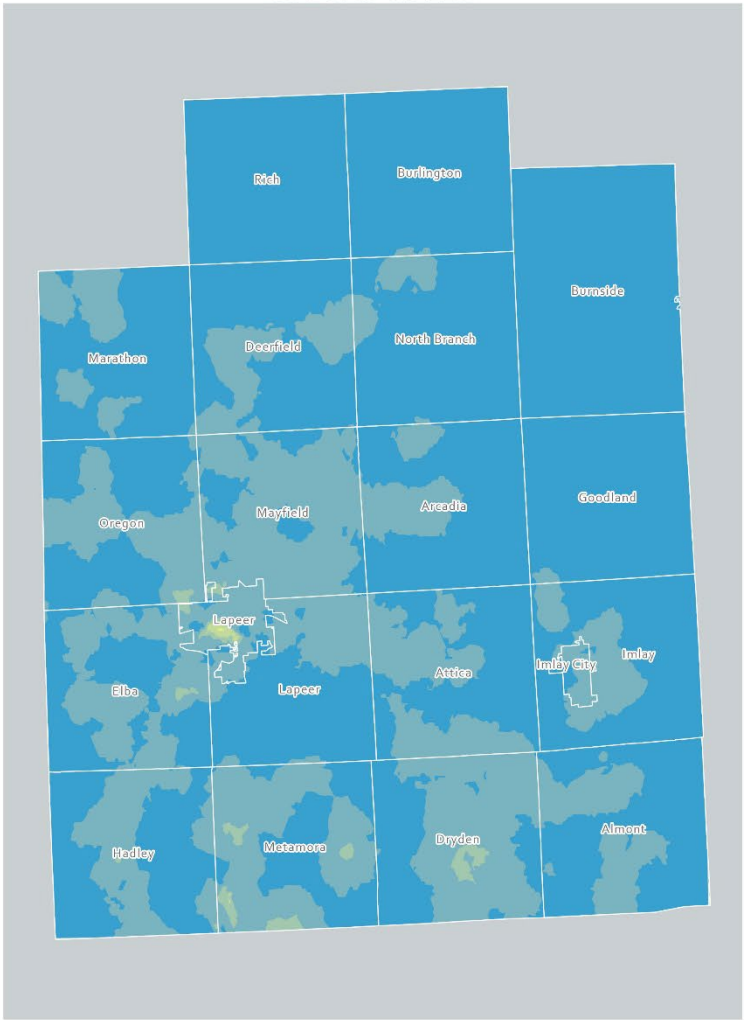
**ESTIMATED
INTERNET SPEE**



DOWNLOAD SPEED



UPLOAD SPEED



**Estimated Speed
(Mbps)**

- 0 - 3
- 3 - 10
- 10 - 15
- 15 - 25
- 25 - 50
- 50 - 100
- 100 - 180
- 180 - 300
- 300 - 500
- 500 - 1,000



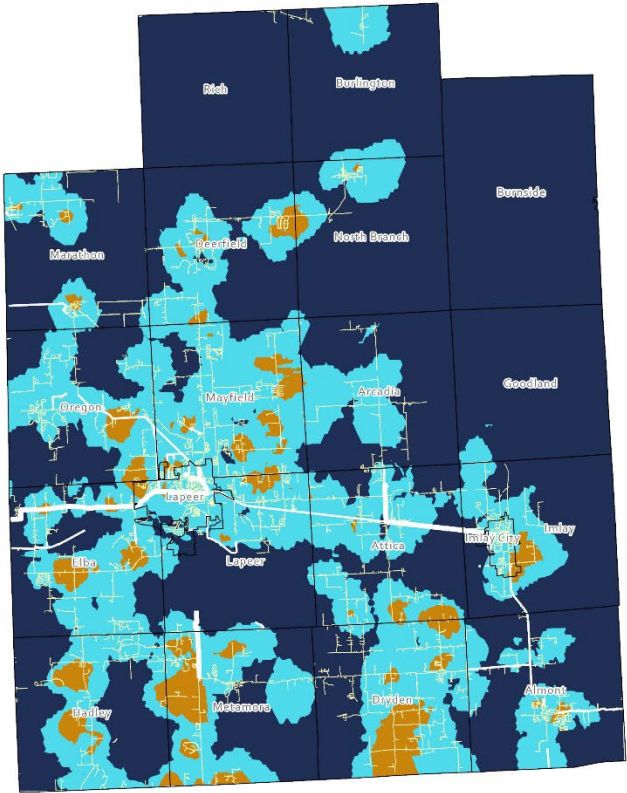
LAPEER COUNTY

ESTIMATED INFRASTRUCTURE LOCATION

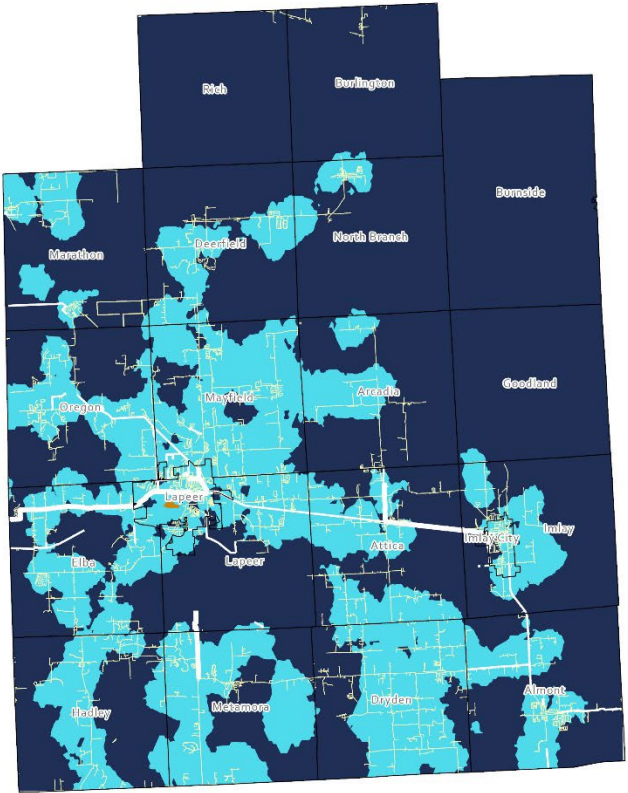
INFRASTRUCTURE ESTIMATION OF LAPEER COUNTY

PROJECT: LAPEER

DOWNLOAD SPEED



UPLOAD SPEED



**Download Estimated
Speed (Mbps)**

- 0 - 25
- 25 - 100
- > 100

**Upload Estimated
Speed (Mbps)**

- 0 - 3
- 3 - 20
- > 20

MIHI Audit Data

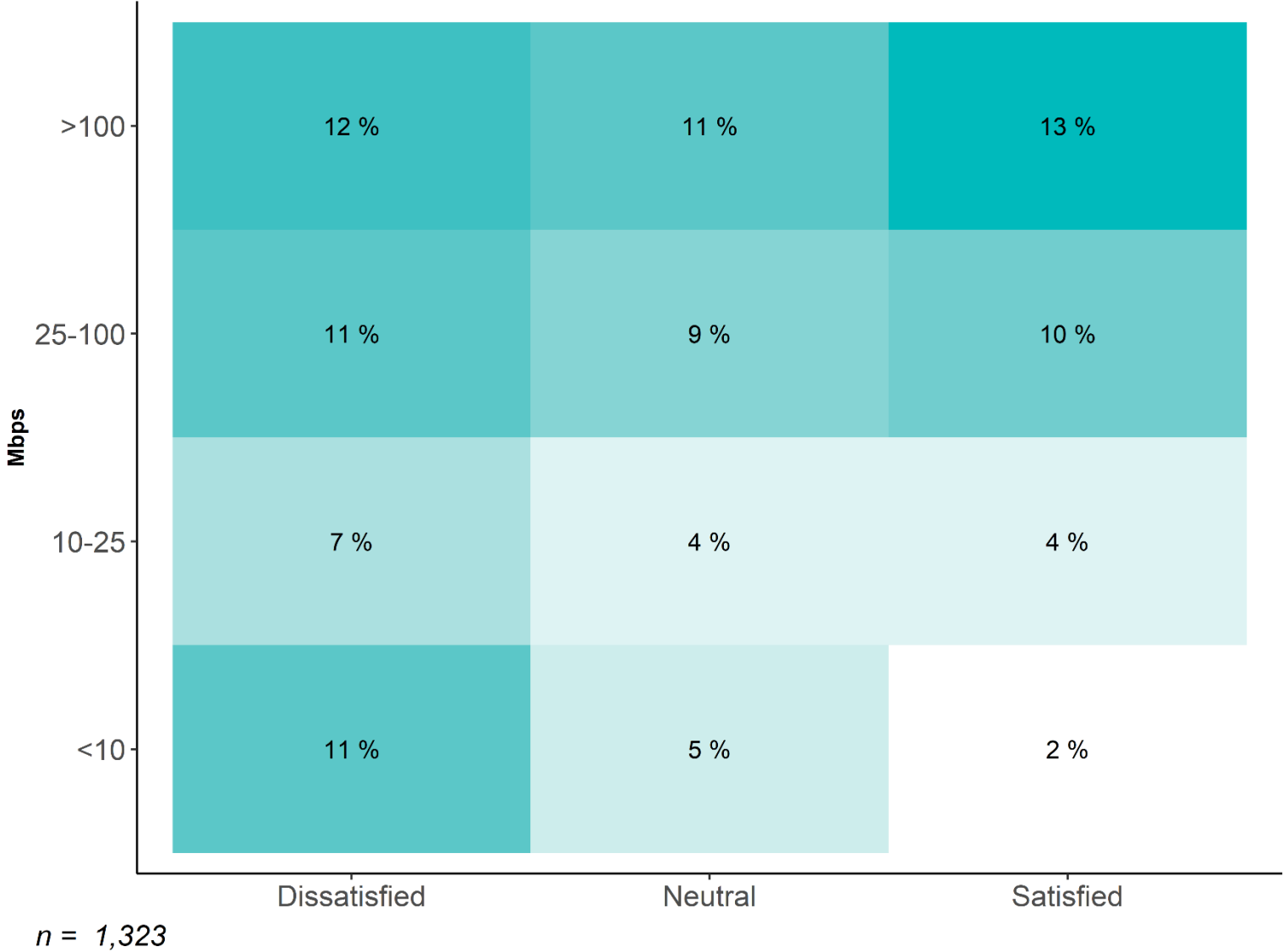
- Coaxial
- FTTP
- Fiber
- Fiber Transport
- 00.0-25.0
- 25.0-100.0
- 100.0-630.039092
- NoData

Esri, NASA, NOAA, USGS, Province of Ontario, Esri, HERE, Garmin, Swire, Mapbox, METI/NASA, USGS, EPA, NPS, USDA



LAPEER COUNTY

SATISFACTION BY INTERNET SPEED

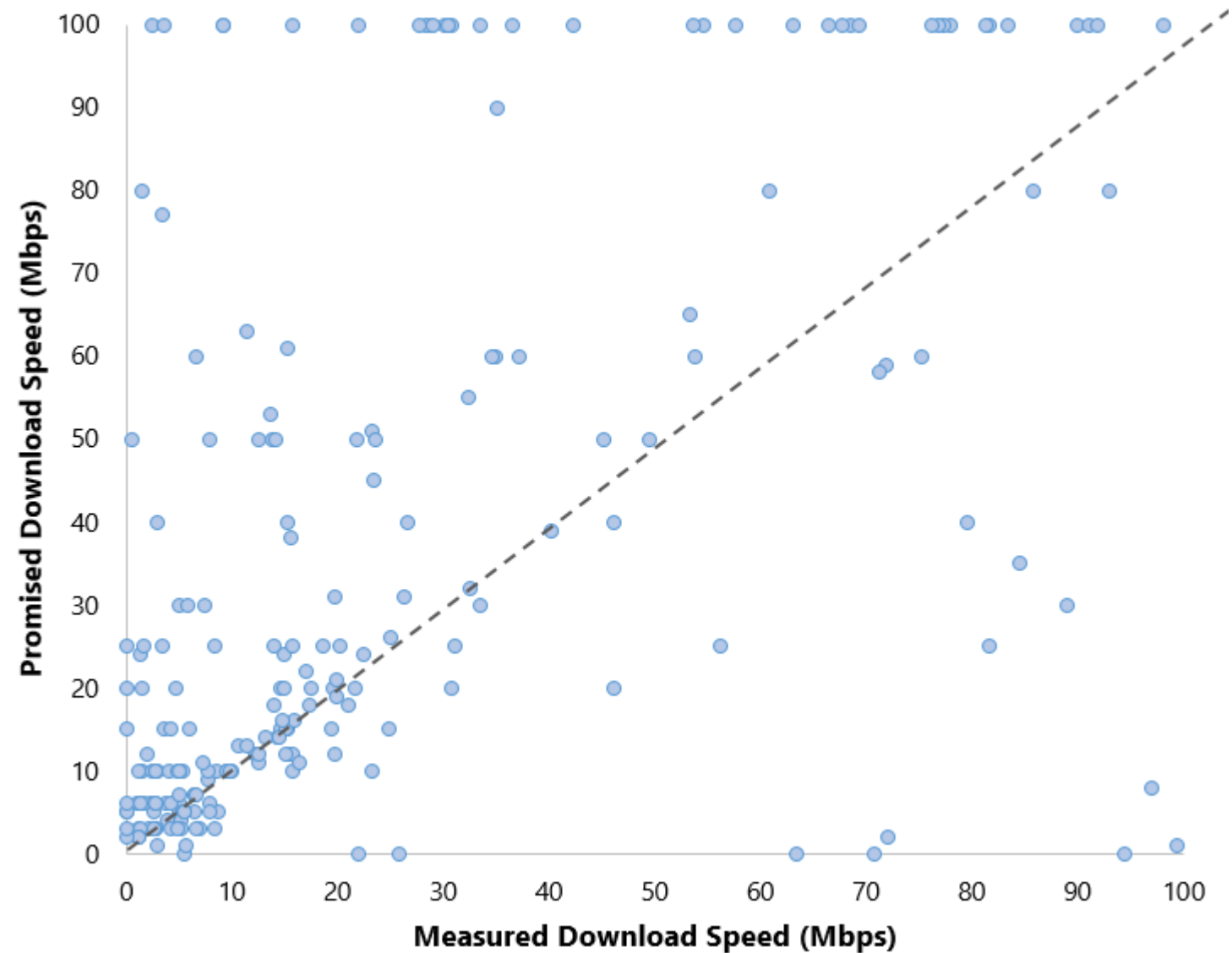




LAPEER COUNTY

PROMISED VS ACTUAL INTERNET SPEEDS

~~Up to 100 Mbps~~

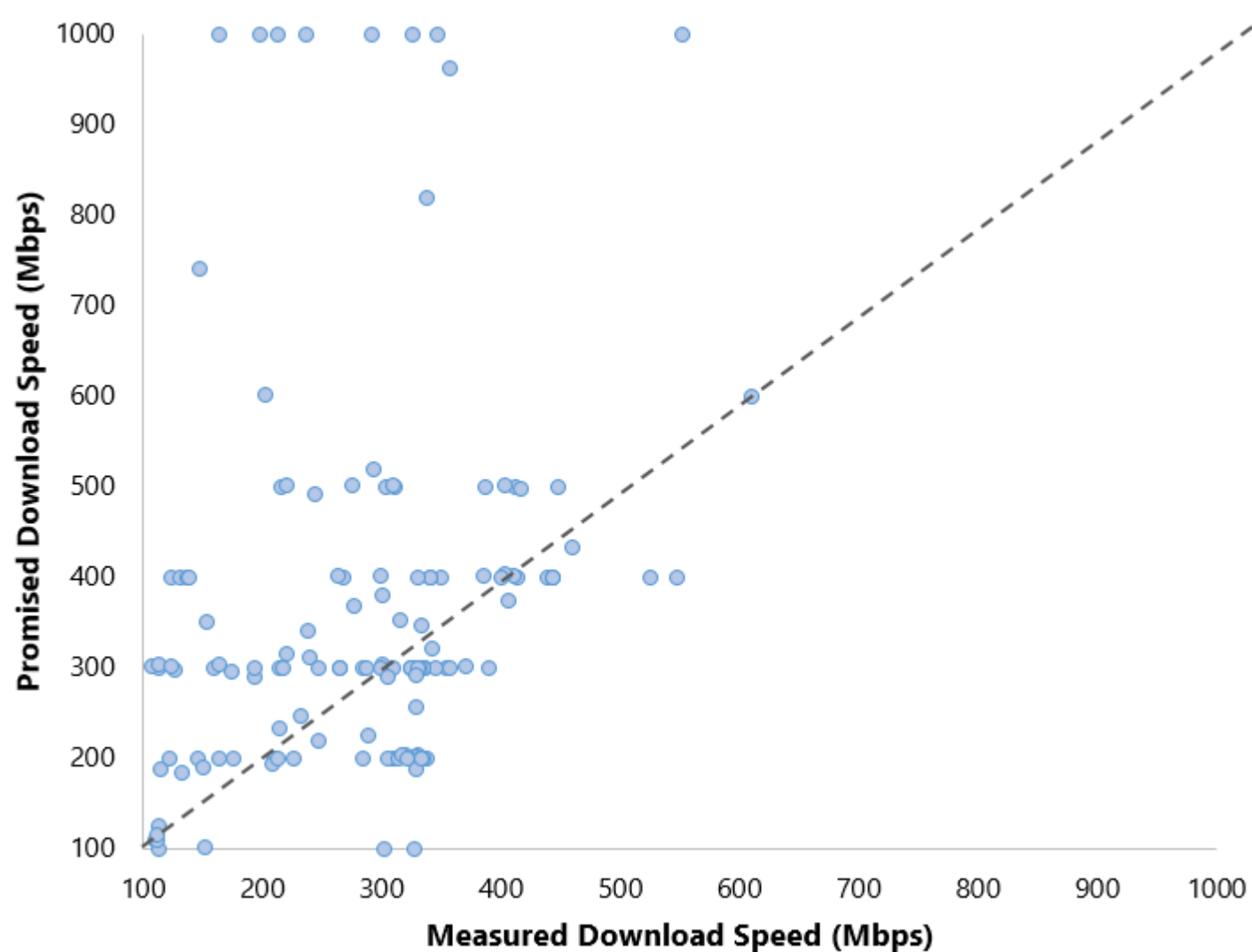




LAPEER COUNTY

PROMISED VS ACTUAL INTERNET SPEEDS

~~100 Mbps +~~

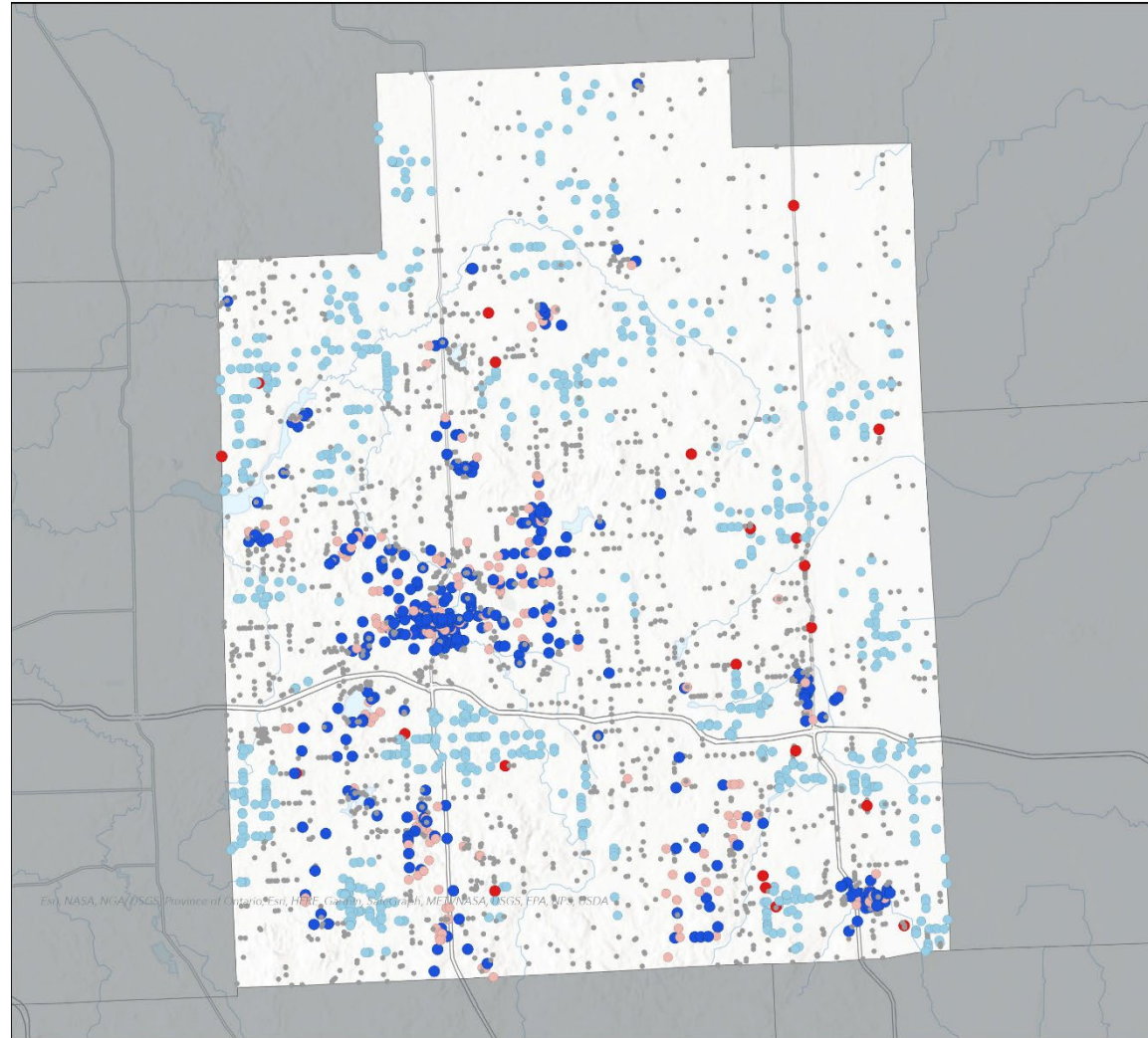


CLUSTERS AND OUTLIERS OF LAPEER COUNTY



LAPEER COUNTY

HOUSEHOLDS WITH DIFFERENT SPEEDS THAN NEIGHBORS



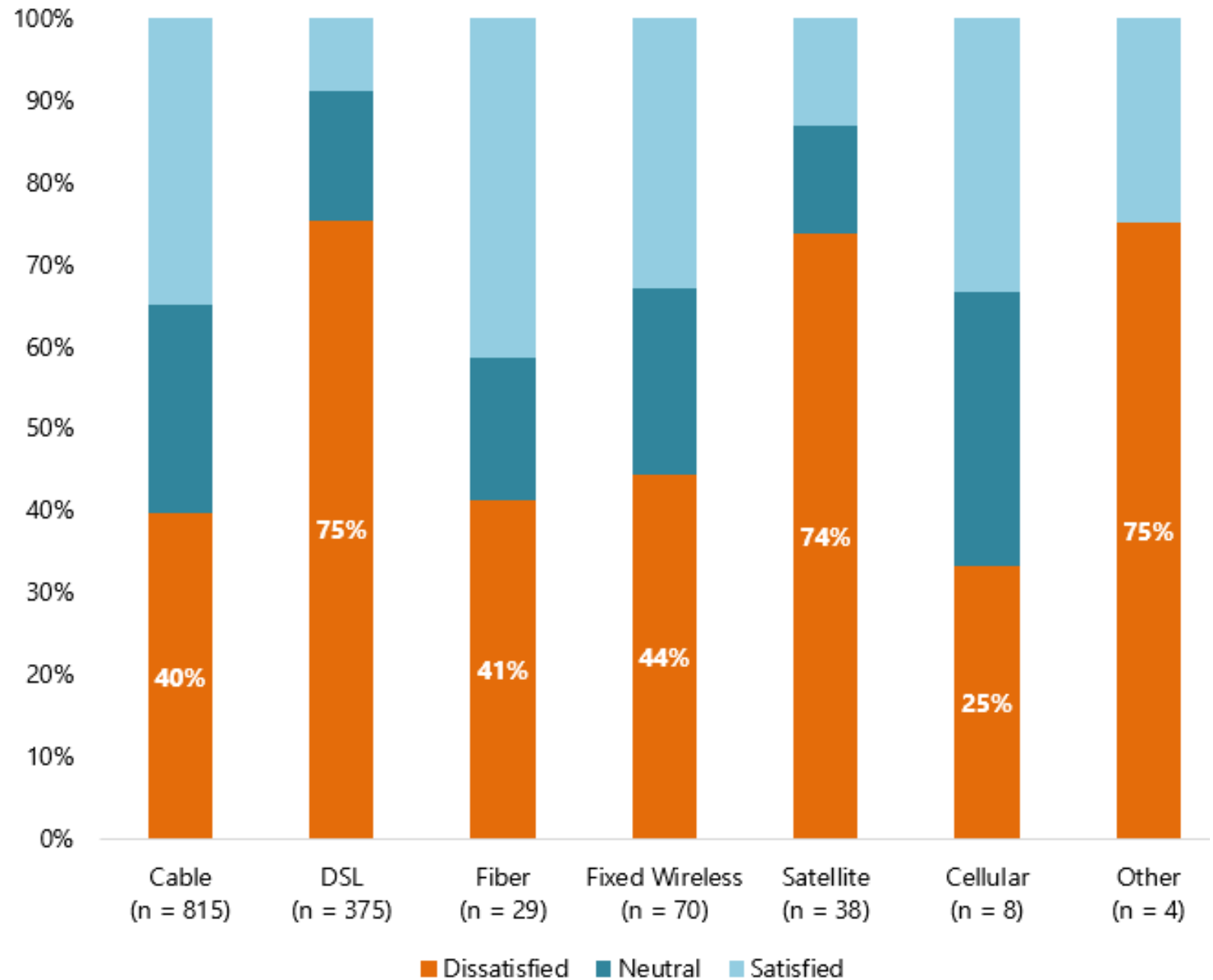
DOWNLOAD SPEED CLUSTERS AND OUTLIERS

- High-High cluster
- Low-Low cluster
- High-Low outlier
- Not significant
- Low-High outlier



LAPEER COUNTY

SATISFACTION BY TECHNOLOGY TYPE





LAPEER COUNTY

RESIDENTS WORKING FROM HOME



Yes -



54%

No -



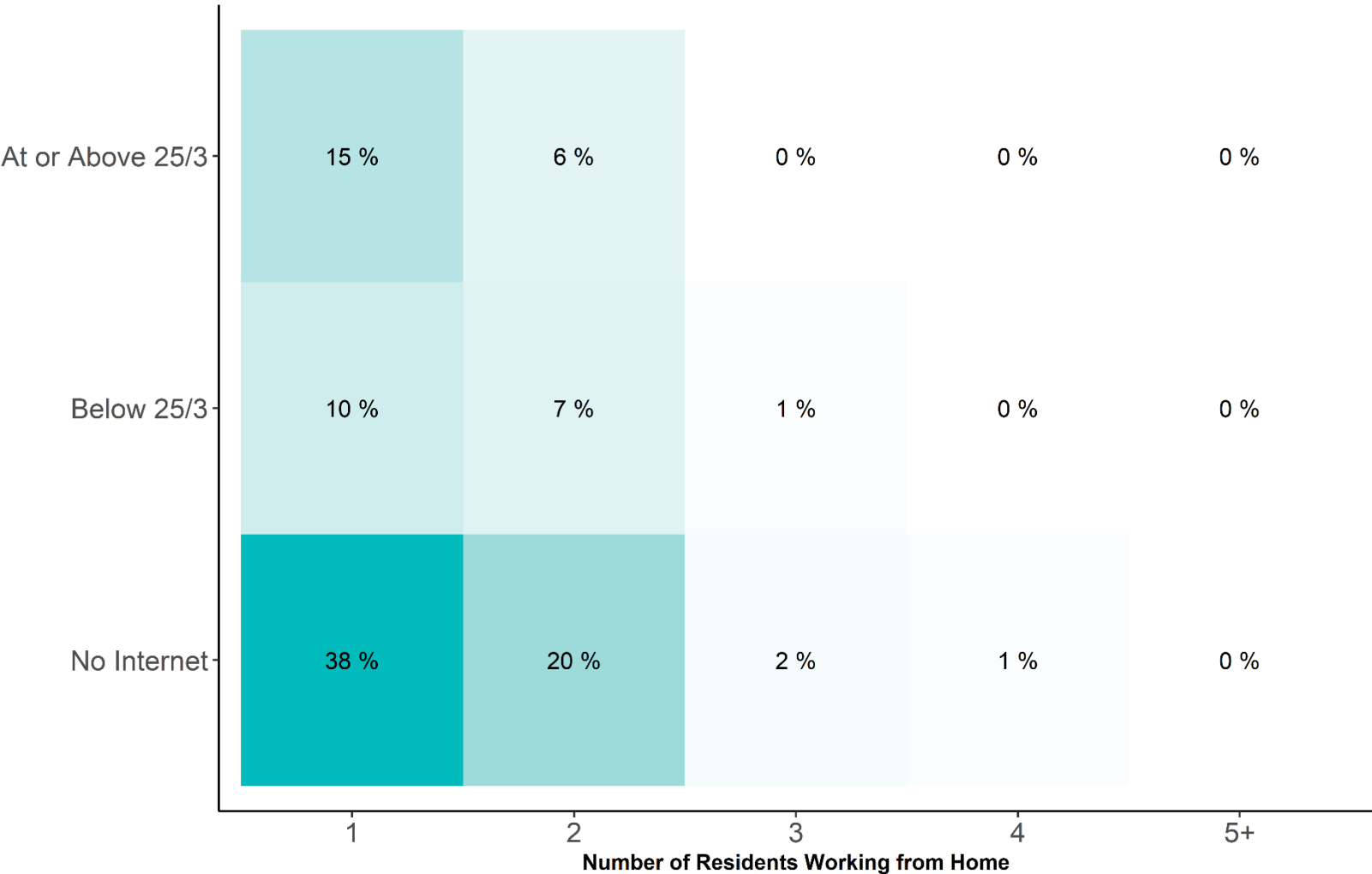
46%

n = 3,504



LAPEER COUNTY

INTERNET SPEEDS OF RESIDENTS WORKING FROM HOME

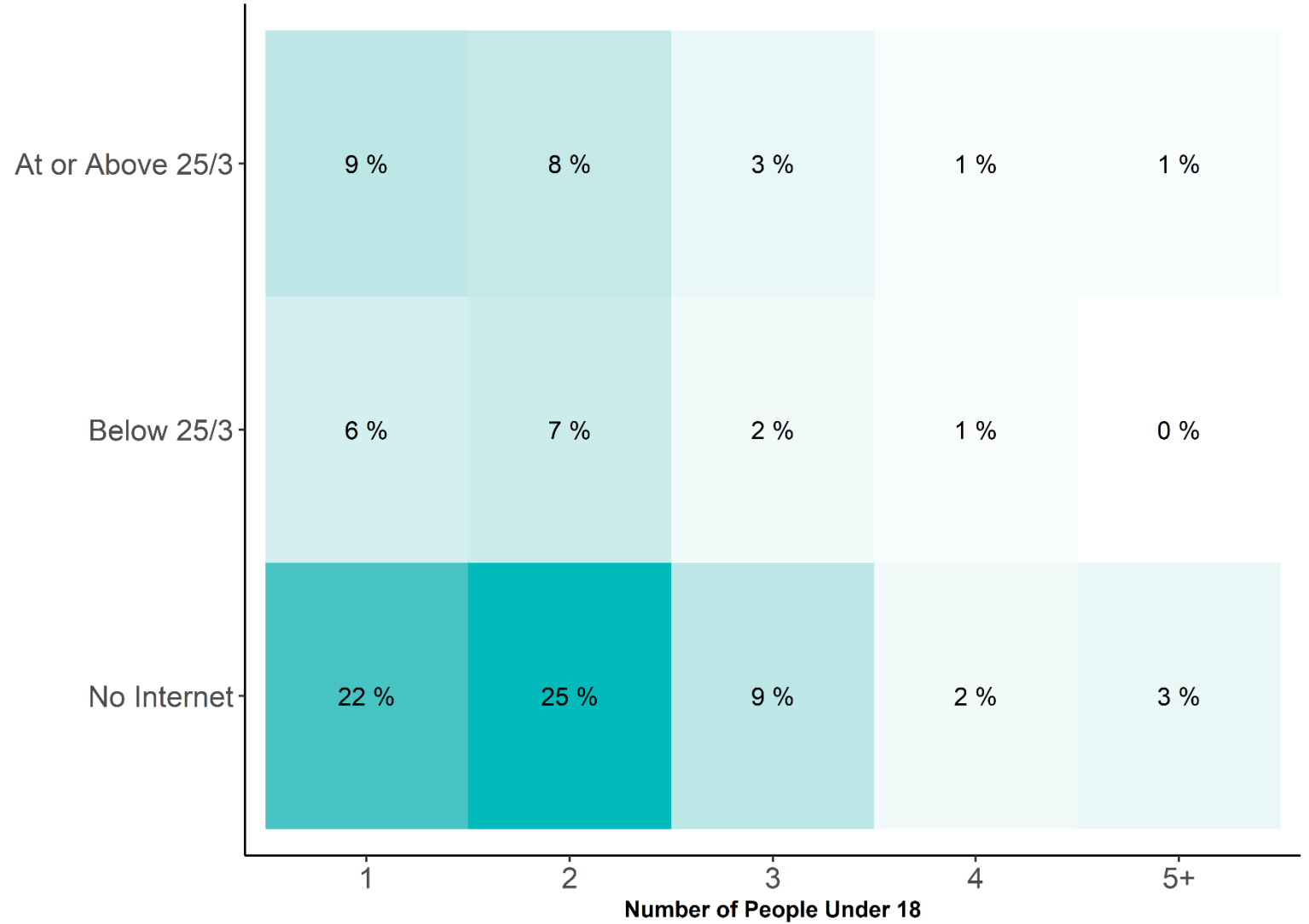


n = 1,862



LAPEER COUNTY

INTERNET SPEEDS OF HOUSEHOLDS WITH CHILDREN

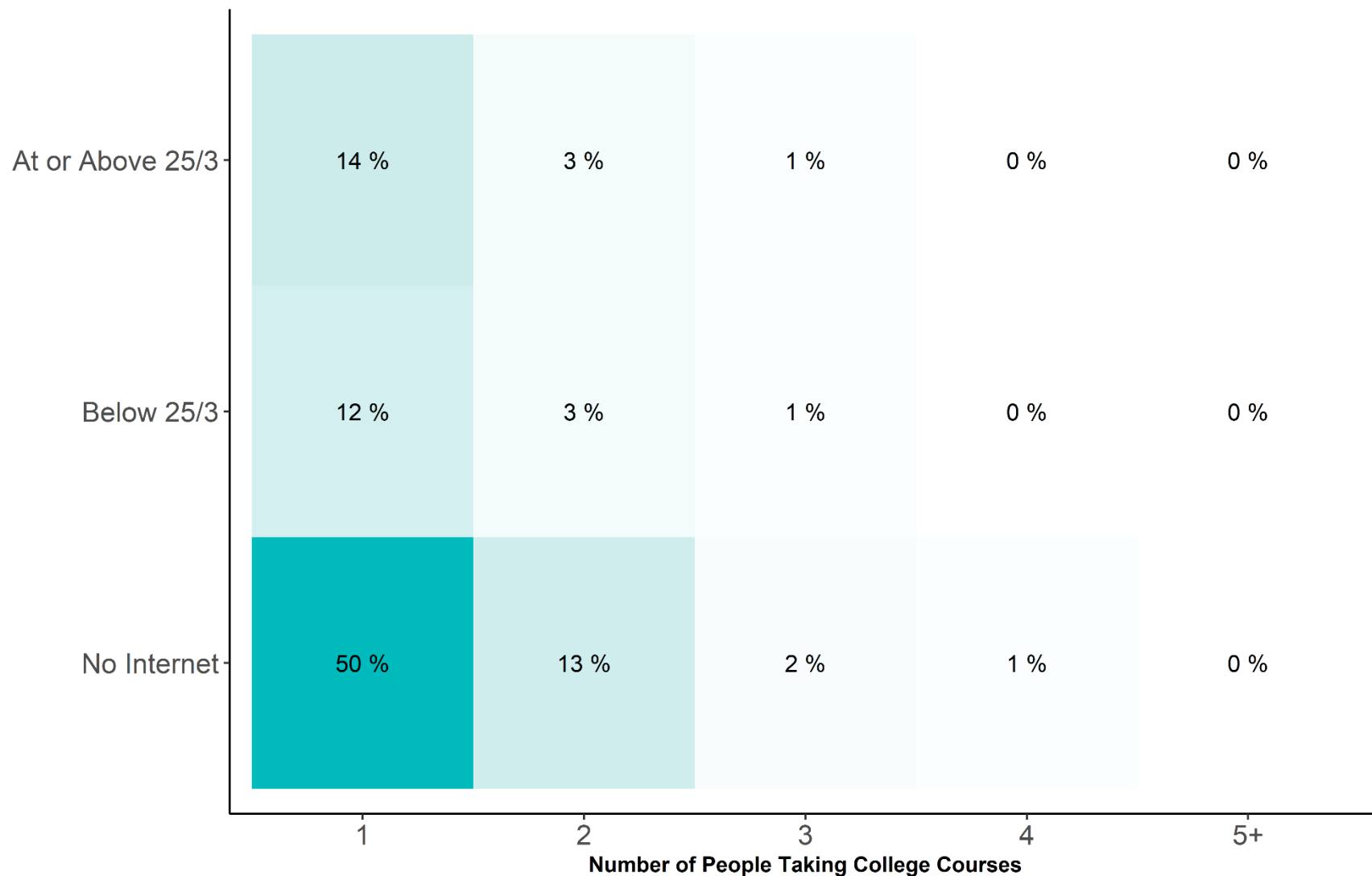


n = 914



LAPEER COUNTY

INTERNET SPEEDS OF HOUSEHOLDS WITH COLLEGE STUDENTS



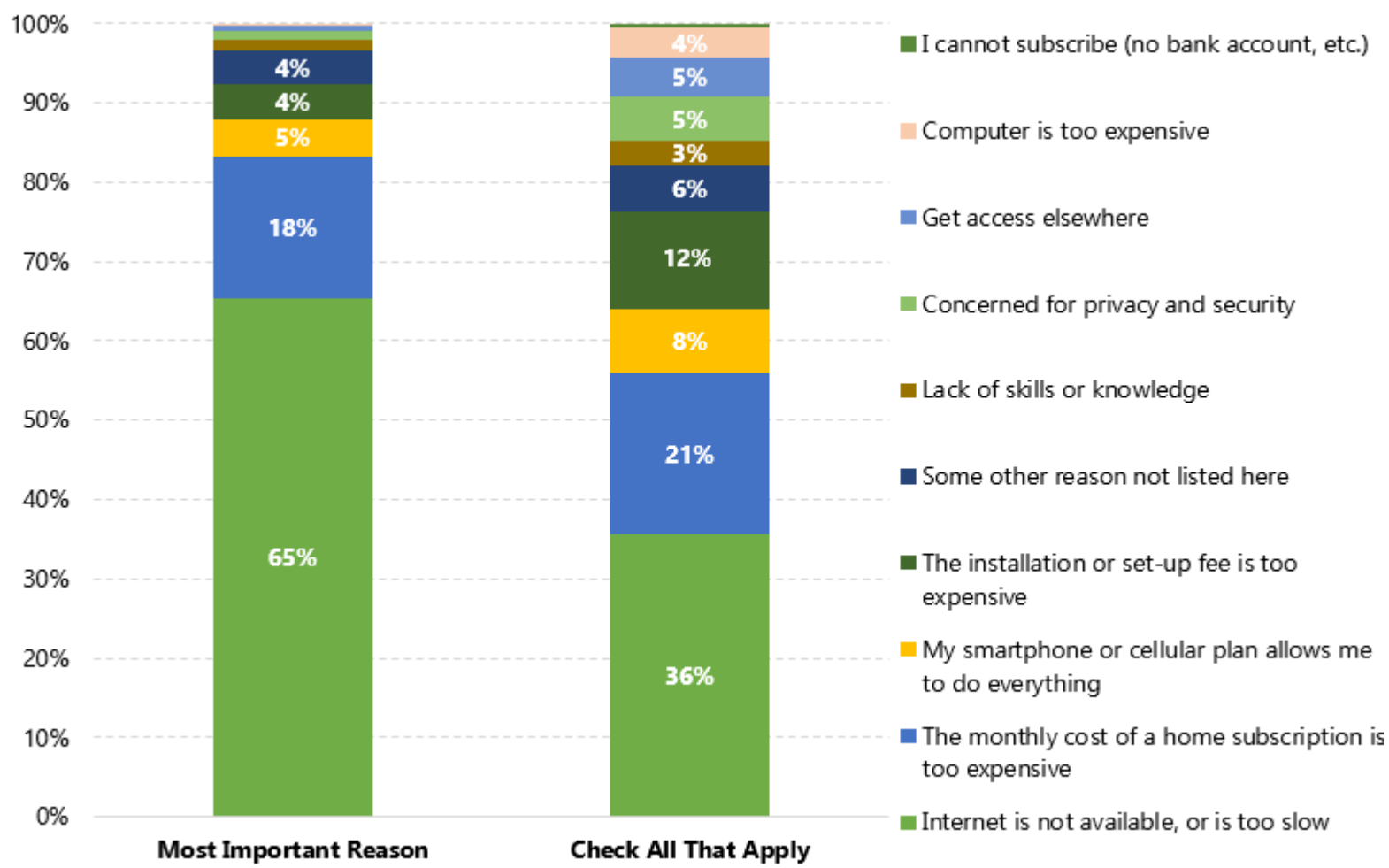
$n = 663$





LAPEER COUNTY

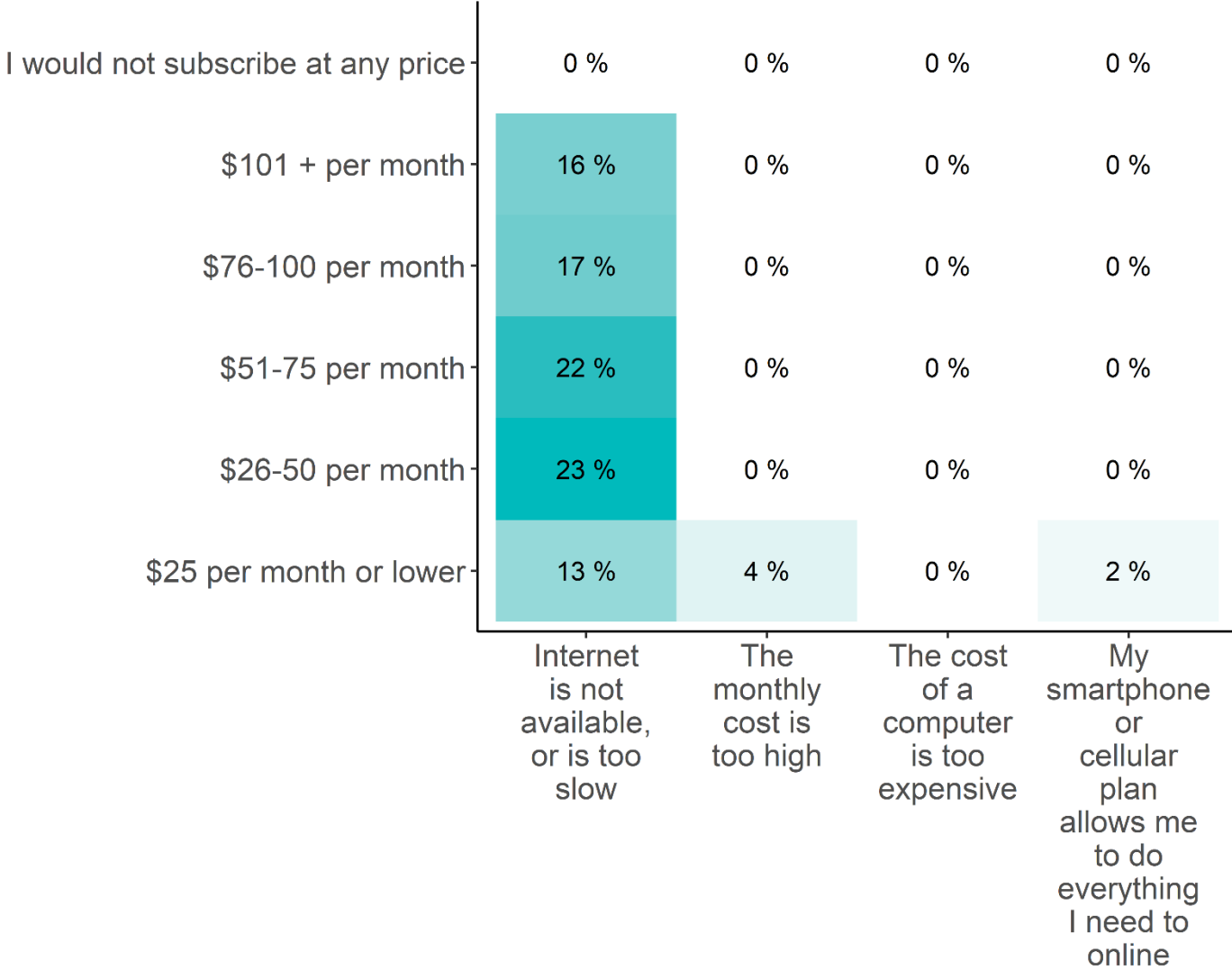
REASONS WHY HOUSEHOLDS LACK INTERNET





LAPEER COUNTY

REASONS WHY HOUSEHOLDS LACK INTERNET BY MAXIMUM PRICE

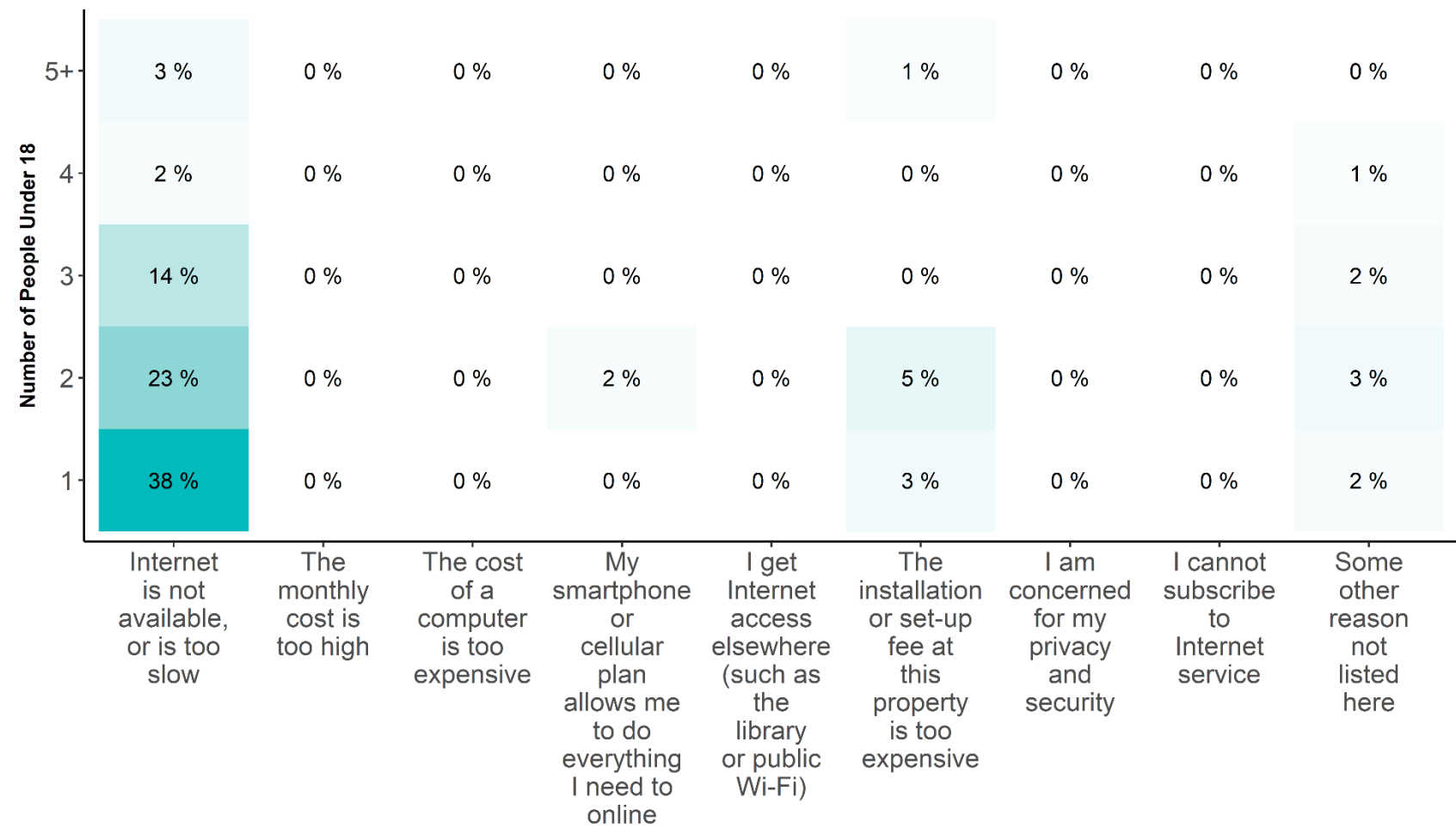


n = 1,781



LAPEER COUNTY

REASONS WHY HOUSEHOLDS WITH CHILDREN LACK INTERNET

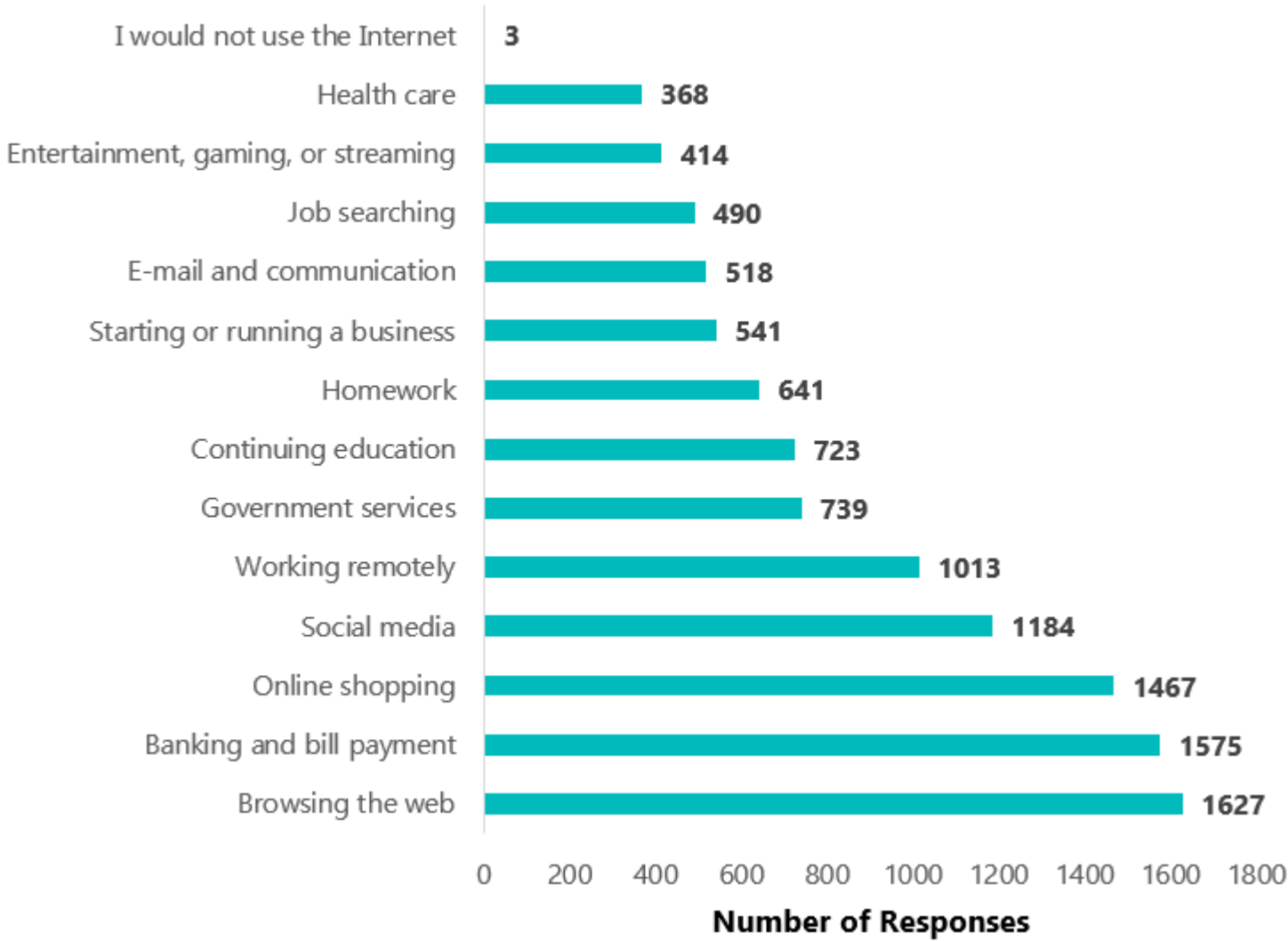


n = 299



LAPEER COUNTY

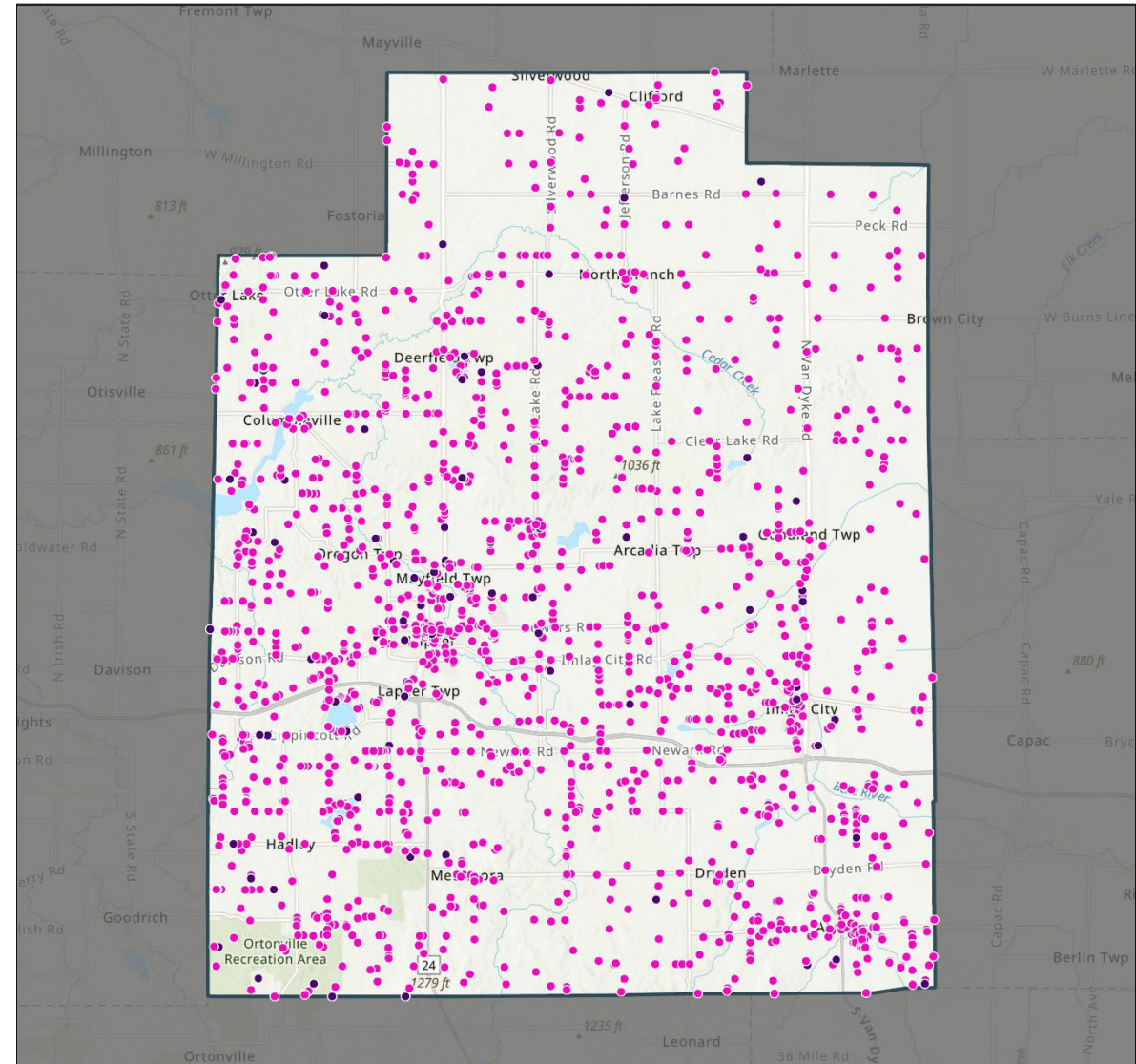
INTENDED USES OF INTERNET





LAPEER COUNTY

HOUSEHOLDS MOVING IN & OUT OF SERVICE



Province of Ontario, Esri, HERE, Garmin, SafeGraph, Mapbox, USGS, EPA, NPS, USDA, Esri, CGIAR, USGS

- Served - Has Canceled Service in Past (87)
- Unserved - Has Had Service in Past (1,695)

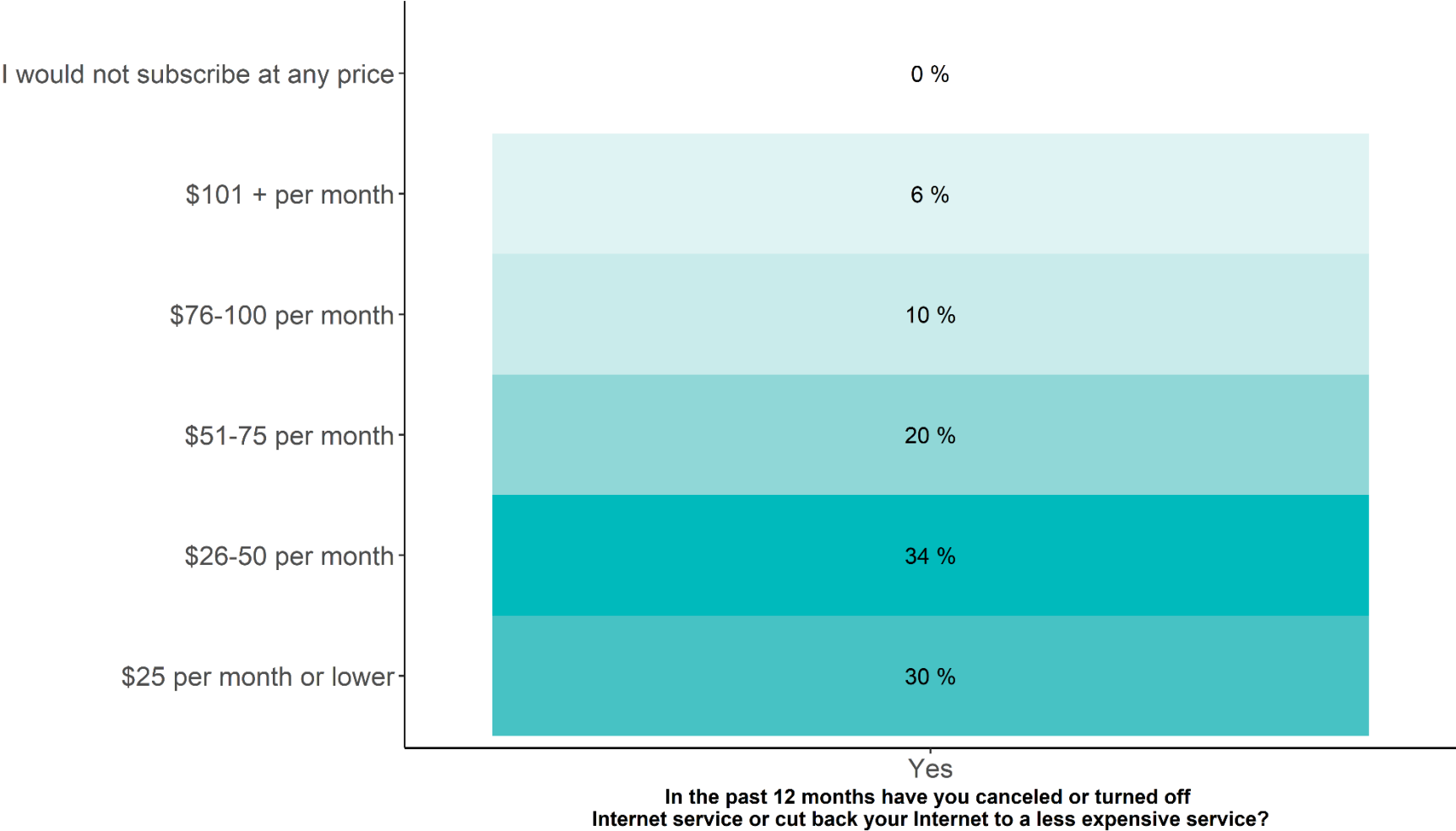
95%
are currently
unserved

- 2% are cell phone dependent
- 4% get Internet elsewhere
- 24% have a child in the home



LAPEER COUNTY

MAXIMUM PRICE FOR HOUSEHOLDS THAT REDUCED SERVICE



n = 176



SUMMARY

The majority of served households do not experience the internet speeds they purchased

Unserved and underserved residences exist across the county, and are concentrated in the northeast townships

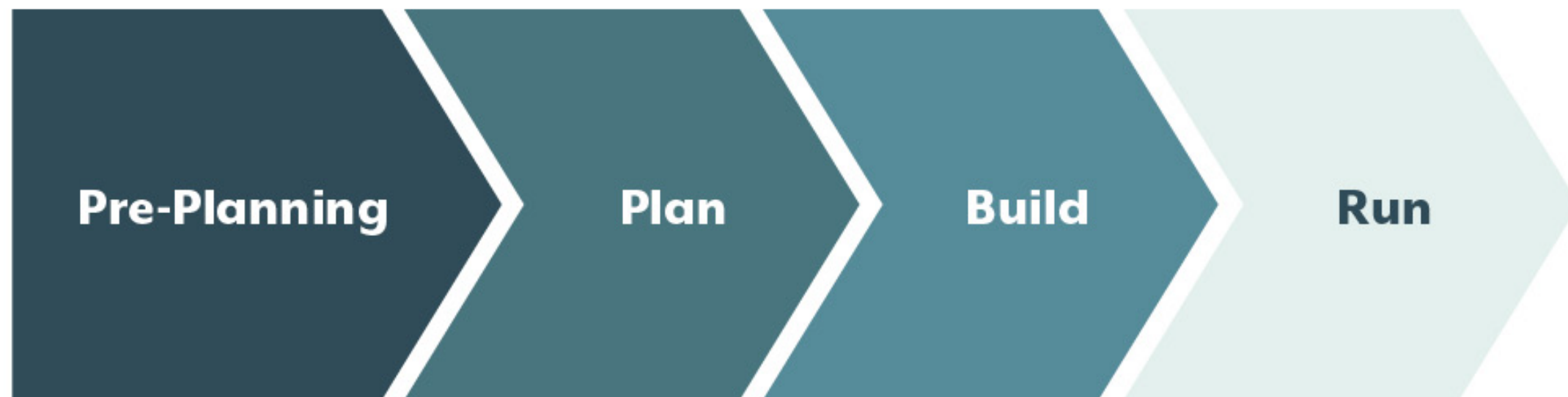
16% of households that are unable to get high-speed internet at their location are willing to pay over \$100 per month for fast internet

21% of residents without home internet access cite cost as the main reason they do not have service

20% of households without access care willing to pay a maximum of \$25 per month for access

NEXT STEPS

What Needs to Happen to Get Broadband?



Your Nonprofit Trail Guides



THE MICHIGAN
MOONSHOT

THE MICHIGAN
MOONSHOT



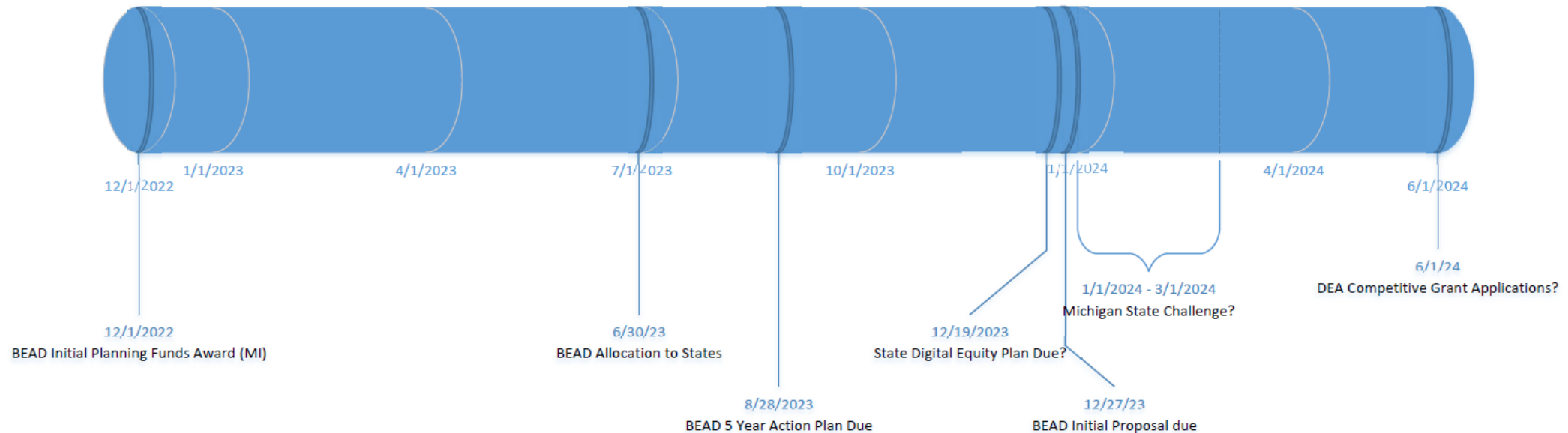
PATHFINDER PROGRAM STEPS

MAY INCLUDE

- 1 Assess Current State & Set Goals**
- 2 Collect Connectivity Data & Resident Sentiment**
- 3 Select an Ownership & Operations Model**
- 4 Feasibility, OSP Inspection, & Pre-Engineering**
- 5 Navigate Legislative & Legal Requirements**
- 6 Secure Funding**
- 7 Engineer & Build or Expand**
- 8 Network Operation Guidance**

THE MICHIGAN
MOONSHOT™

BROADBAND EQUITY, ACCESS & DEPLOYMENT SUBGRANT TIMELINE (ESTIMATED)



The estimated date for the Michigan State Challenge is based on 2 assumptions: 1) MIHI will not submit their Initial Proposal until the due date, and 2) The Assistant Secretary for Communications and Information will approve the challenge process (in the Initial Proposal) as quickly as possible

KEY DATES FOR BEAD ELIGIBILITY

Late May 2023 – Availability Challenge deadline for Fabric 4.0

June 2023 – Fabric 3.0 publicly available

August 2023 – Location challenge deadline for Fabric 4.0

November/December 2023 – Fabric 4.0 publicly available

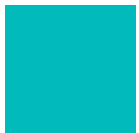
January 2024 – Estimated start of state map challenge process

2024 – BEAD Subgrant application window opens

NEXT STEPS

Problem is now well defined, what next?

- **Define success** - what is the desired end state? (Create the 'vision')
- **Identify abilities and appetite** - align authorities and abilities around the 'vision'. (Create the 'mission'.)
- **Document a plan** - organize and institutionalize actions that leverage capacities to fulfill mission, achieve vision.



GUIDING PRINCIPLES

Because what the problem needs is leadership:

- **Decisive, actionable steps** clearly articulated with regular systematic review is essential for progress.
- **The level of County ownership** for the problem will be the most challenging decision.
- **Indecision** (handwringing) is simply a slow death (a path to certain failure).

